

## INVITATION TO BID

STATE OF ALABAMA

COUNTY OF BALDWIN

**NOTICE IS HEREBY GIVEN** that the County Commission of Baldwin County, Alabama, will receive bids in the Purchasing Office on February 23, 2026, at 1:30 P. M., for the Provision of Crushed Aggregates for the Baldwin County Commission. Bids will be opened February 23, 2026, at 2:00 P. M., in the Purchasing Conference Room located in the Annex III Building at 257 Hand Avenue, Bay Minette, Alabama. Bids received after February 23, 2026, at 1:30 P. M., deadline will not be considered. All times to be determined solely by the clock on the wall of Purchasing Conference Room. For all purposes and uses herein, a bid and all required paperwork is “received” at the time and date indicated on the Purchasing Office file stamp which shall be impressed on the face of all such documents when and as presented at the Purchasing Office.

### **SEE ATTACHED SPECIFICATIONS**

This invitation package consists of **TWENTY-FOUR (24)** pages. Bidders shall verify that they have received all pages as indicated. If all pages have not been received, then it is the responsibility of the bidder to contact the Purchasing Director, Wanda Gautney at (251) 580-2520 phone, (251) 580-2536 fax.

### **GENERAL BID INFORMATION**

Bidders shall carefully read all parts of the invitation package with its accompanying schedules and attachments, if any. Bidders shall direct all requests for explanation or additional information concerning the meaning or interpretation of the conditions or attached specifications of this invitation to Wanda Gautney in writing or e-mail ([wgautney@baldwincountyal.gov](mailto:wgautney@baldwincountyal.gov)) in sufficient time for reply before submission date of bids. The Commission cannot, and does not, guarantee that such inquiries sent by mail or e-mail will be received timely or prior to the required submission date and time. It is the responsibility of the bidder to contact the Purchasing Director, Wanda Gautney, at (251) 580-2520 if a reply is not received.

The use of specific names and numbers in the specifications is not intended to restrict the bidder or any seller or manufacturer but is solely for the purpose of indicating the type, size and quality of materials, product services, or equipment considered best suited for Baldwin County.

Contact initiated by a potential bidder with a County Official will be only as specifically set out in this invitation. Any other contact with a County Official initiated by a potential bidder or bidder regarding this bid, **between the date of this invitation and the date of bid award**, shall be deemed and treated as an attempt to unduly influence the bid award, and may be grounds for rejection of the bid submitted by the bidder initiating such other contact, at the discretion of the Baldwin County Commission.

## **BIDDER QUALIFICATIONS**

All Bidders must be in, and remain, and by submitting a bid represent that they are and will remain, in compliance with all applicable Federal, Alabama State, County and municipal laws, regulations, resolutions and ordinances. In particular, and without limitation, all bidders must be and remain licensed and permitted in accordance with The Code of Alabama Title 10, concerning corporations doing business within Alabama, Title 34, dealing with licensing for businesses, and Title 40, concerning licenses and taxation, unless otherwise exempt. All bidders shall be prepared to timely submit to the County non-confidential evidence or documentation demonstrating that they are presently licensed and permitted under Alabama law. Such non-confidential evidence or documentation is encouraged to be submitted with the Bid Package.

The bidder expressly acknowledges, to and for the benefit of the Baldwin County Commission, that this Agreement may be funded with **federal grant monies** and, therefore, bidder expressly warrants and agrees that it shall at all times comply with all applicable federal, state, local and municipal laws and regulations. For more information about the Federal regulations visit the website <https://www.ecfr.gov/current/title-2/subtitle-A/chapter-II/part-200> Code of Federal Regulations.

**The Certification Regarding Lobbying form must be completed and submitted in your response package.**

**All bidders must provide proof of proper certification of authority, and any required registration, to transact business in this State, in order to perform work for the Baldwin County Commission. Bidder's Registration Number shall be provided on the Bid Response Form. The phone number for the Alabama Secretary of State is (334) 242-5324, Corporate Division.**

**All vendors, contractors and grantees are required to comply with the Alabama Immigration Law under Sections 31-13-9 (a) and (b) of the Code of Alabama. Information and forms can be found on the Baldwin County Commission's Purchasing website under E-Verify at [www.baldwincountyal.gov](http://www.baldwincountyal.gov). Please complete and submit with your Bid Response the E-Verify package.**

**All Bidders that qualify as a Disadvantaged Business Enterprise (DBE) must provide supporting documentation in their bid response along with the completed DBE Registration form that may be downloaded from the County website [www.baldwincountyal.gov](http://www.baldwincountyal.gov). A Disadvantaged Business Enterprise or DBE means a for profit small business that (1) is at least 51% owned by one or more individuals who are both socially and economically disadvantaged or, in the case of a corporation, in which 51% of the stock is owned by one or more such individuals; and (2) whose management and daily business operation are controlled by one or more of the socially and economically disadvantaged individuals who own it.**

### **PREPARING THE BID**

Bids must be typed or handwritten in ink. A bid submitted in pencil unacceptable. The Bid Guarantee and Bid Response Form must be the original paperwork; copies are not acceptable. All required paperwork must be received in the sealed Bid Package.

These specifications exhibit the general intent and purpose of Baldwin County regarding this bid; and they shall be so considered by the bidders. Accordingly, the bidder admits and agrees that said specifications are not complete in every detail. The bidder also agrees that the work and materials not indicated, or expressly mentioned in these specifications, but which are reasonably necessary for the full and faithful performance of the item(s) bid in accordance with the full and faithful intent, will be included in the bid and incorporated in the work the same as if fully and expressly indicated and specified.

The Bidders shall list on a separate sheet of paper any variations from, or exceptions to, the conditions and specifications of this bid. The exceptions shall be labeled “**EXCEPTION(S) TO BID CONDITIONS AND SPECIFICATIONS,**” and shall be attached to the front of the bid inside the Bid Package. Additional features and/or capabilities not included in the specifications may be included in the bid.

To facilitate the bid evaluation and tabulation, bids should be submitted with specifications identified in the order in which they appear in this document. If applicable, the bidder will provide cost in two (2) categories:

- (1) Cost using material as specified.
- (2) Cost using material as specified of at least 25% recycled material, if available.

It is the intent of the Commission to award bids which include recycled material when not prohibitive in cost and when in compliance with all other terms and conditions of the Alabama Competitive Bid Law.

**IF THE TOTAL PROPOSED BID AMOUNT EXCEEDS \$10,000.00, A BID GUARANTEE OF AT LEAST 5% OF THE PROPOSED BID AMOUNT, NOT TO EXCEED \$10,000.00, WILL BE INCLUDED WITH THE BID.** Such bid guarantee shall be a bid bond (individual or annual, provided, that bonding is available for such services, equipment, or materials), postal money order, certified check, cashier’s check, Letter of Credit, or certain bonds or note of the United States. This is required by the Alabama Competitive Bid Law, Title 41, Chapter 16, **Code of Alabama 1975**, as amended; **no exceptions will be allowed.**

### **SUBMITTING THE BID**

In the event that a bidder is financing the product(s) through another agency other than itself, the financing agency must sign the Bid Response Form along with the bidder. A copy of the financing agreement and all conditions must be included with the Bid Response Form. The bidder and the Financing Agency will be held to the requirements stated in the Invitation to Bid. Any assignment of the financing agreement must be approved by the financing agency and the County Commission. Failure to disclose the financing information and all conditions will disqualify the Bidder at the County’s discretion.

Bidders that are returning a **NO BID** statement shall write on the outside of the Bid Package, the **Bid Number (i.e., WG26-17) with “NO BID”** written underneath. The Bid Package will not be opened in public, but it will be noted that the bidder did respond.

Bids may be hand delivered at any time prior to the bid opening date and time to the Baldwin County Purchasing Office, Annex III Building, 257 Hand Avenue, ATTN.: Wanda Gautney, **(mailing) 312 Courthouse Square-Suite 15, Bay Minette, Alabama 36507**. The Commission cannot guarantee that bids sent by mail or courier will be received on or before the bid opening day and time as required. Bids received after the deadline shall not be accepted and shall be returned.

All bids received must be in a sealed envelope plainly marked, **“WG26-17” “PROVISION OF CRUSHED AGGREGATES.”** Bids submitted by “Express/Overnight” services must be in a separate inner envelope/package sealed and identified as stated in the previous sentence. Bidders and any other interested individuals are invited to attend the bid opening.

### **BID AWARD**

The Baldwin County Commission, at its discretion, may offer an extension of the Contract awarded to the successful bidder for an additional period not to exceed twelve (12) months or until such time that a new contract can be bid and awarded. Any extension will be at the same prices, terms and conditions. Any extension must have the written approval of both the County and Awarded Bidder within sixty (60) days prior to the expiration of the original contract.

All factors stated in this invitation package will be considered in determining the successful bidder, and any omission(s) of the stated requirements may be cause for rejection of the bid (s), all as determined solely by the Baldwin County Commission.

The County Commission reserves the right to study bids as to their correctness and may award the bid within a thirty (30) day period, but the County Commission reserves the right to extend the bid award for an additional thirty (30) days until an award decision can be made.

The Baldwin County Commission reserves the right to reject any, and all bids, to waive any informality in bids, and to accept in whole or in part, such bid or bids, solely at its discretion.

### **TITLE 39/CODE OF AL COMPLIANCE**

As a condition of any Bid Award and the respective contract(s) pursuant thereto, the County places full reliance upon the fact that it is the sole responsibility of any contractor, person or entity entering into such a contract with Baldwin County for the prosecution of any public works, to ensure that they and/or any of their respective agents comply with all applicable provisions of Title 39-1-1 et seq. Code of AL 1975.

More specifically, any contractor, person or entity entering into such a contract with Baldwin County for the prosecution of any public works shall be in compliance with, and have full knowledge of, the following provisions of Title 39:

“(f) The Contractor shall, immediately after the completion of the contract give

notice of the completion by an advertisement in a newspaper of general circulation published within the city or county in which the work has been done, for a period of three successive weeks. A final settlement shall not be made upon the contract until the expiration of 30 days after the completion of the notice. Proof of publication of the notice shall be made by the contractor to the authority by whom the contract was made by affidavit of the publisher and a printed copy of the notice published . . .” §39-1-1(f) Code of AL 1975.

“(g) Subsection (f) shall not apply to contractors performing contracts of less than fifty thousand (\$50,000) in amount. In such cases, the governing body of the contracting agency, to expedite final payment, shall cause notice of final completion of the contract to be published one time in a newspaper of general circulation, published in the county of the contracting agency and shall post notice of final completion on the agency’s bulletin board for one week, and shall require the contractor to certify under oath that all bills have been paid in full. Final settlement with the contractor may be made at any time after the notice has been posted for one entire week.” §39-1-1(g) Code of AL 1975.

**NOTE: Any failure to fully comply with this section or any applicable laws of the State of Alabama shall be deemed a material breach of the terms of both the Bid Award and the respective contracts resulting there from. Furthermore, Baldwin County takes no responsibility for resulting delayed payments, penalties, or damages as a result of any failure to strictly comply with Alabama Law.**

Done this 20th day of January 2026.

James E. Ball \_\_\_\_\_ s/s  
JAMES E. BALL, Chairman  
Baldwin County Commission

**BID #WG26-17 SPECIFICATIONS**  
**CRUSHED STONE, CRUSHED SLAG, CRUSHED GRAVEL, CRUSHED CONCRETE,**  
**CRUSHED AGGREGATE BASE MATERIALS**

Baldwin County desires bids for Crushed Stone, Crushed Slag, Crushed Gravel, Crushed Concrete and Crushed Aggregate Base Materials for the Baldwin County Highway Department.

**It is the intent of the Baldwin County Commission to award this contract for a twelve (12) calendar month period beginning on the date of award.**

Supply location will play a large part of the bid award. More than one bidder may be awarded due to the supply location. Baldwin County will award on a per "**Maintenance Area**" basis as shown on the attached map.

The County Engineer or his designee will factor in the supply location in determining the low bidder for each "**Maintenance Area**" for all material **picked up** by Baldwin County. The County operating cost will be included in the bid evaluation to determine which supplier is the overall low bidder for each item.

In the event that the awarded bidders' prime location cannot supply material, then the secondary awarded bidder will become the prime supplier for that day or project. This will be noted by the County representative at the bottom of the request for materials.

All grades of aggregate listed on the Bidders Response form shall include a price F.O.B. for material picked up by Baldwin County at the bidder's supply location. Bidders shall stipulate the supply location applicable to the material. Bidders shall include a delivered price for all grades of the aggregates as noted on the Bidders response form. Delivery shall be in truck load quantities as ordered by Baldwin County F.O.B. and delivery will be per "**Maintenance Area**" with the Maintenance Areas as shown on the attached map.

**All materials listed in this bid should meet the latest addition of the ALDOT Standard Specification Book.**

**NOTE: Number 5 Stone whether it is crushed gravel, crushed slag or crushed stone may be provided unwashed. This material is proposed primarily for maintenance of dirt roads.**

**CRUSHED STONE**

Crushed Stone according to section 801.03 of Alabama Department of Transportation Standard Specifications for Highway Construction, (ALDOT Specifications) latest edition; Class 1 and Class 2 Rip-Rap per Section 814.01(b) of the ALDOT Standard specifications, latest edition; Type 3 Masonry Stone per section 812 of ALDOT Standard specifications latest edition.

Stone shall be in accordance with ALDOT Specifications and test reports shall be furnished when requested.

**CRUSHED SLAG**

Crushed Slag according to Section 801.05 of ALDOT Specifications, latest edition, for use by the Baldwin County Highway Department.

Slag shall be in accordance with ALDOT Specifications and test reports shall be furnished when requested.

**CRUSHED GRAVEL**

Crushed Gravel in accordance with ALDOT Specifications, Section 801.03, and test reports shall be furnished when requested.

Crushed gravel shall be offered in sizes consistent with ALDOT Gradation 467, 5, 6, 7, 78, 810, and gravel screenings. Material is proposed for maintenance use as aggregate surfacing or with asphalt.

**CRUSHED AGGREGATE BASE MATERIALS**

Crushed Aggregate Base Materials shall be in accordance with ALDOT Specifications, Section 825, and test reports shall be furnished when requested.

All limestone base materials must meet the gradation requirements of ALDOT Standard Specification Section 825. The source quarry must be listed in the most current ALDOT Approved Source Manual at the time of this bid. The supplier must also participate in the ALDOT's Aggregate Quality Control Program at the supply location.

**NOTE: In no case shall moisture be applied to Crushed Aggregate Base Materials other than caused by natural events.**

**CRUSHED CONCRETE**

All crushed concrete shall meet the gradation requirements of the latest edition of ALDOT Standard Specifications Section 825.03. All deleterious materials including wood, steel, rebar, etc... must be removed from mix.

**2" MINUS SCREENED LIMEROCK BASE**

99% of sample material shall pass 2" sieve

NOTE: This is not an ALDOT classified material.

**WHITE SAND -WASHED**

Washed – Less than 5% retained on 200 sieves.

**BID #WG26-17 RESPONSE FORM**  
**CRUSHED AGGREGATES**  
**Maintenance Area - 100**

Date \_\_\_\_\_

Company Name \_\_\_\_\_

Address \_\_\_\_\_

Phone Number ( ) \_\_\_\_\_

Fax Number ( ) \_\_\_\_\_

Authorized Signature \_\_\_\_\_  
(Please print or type Name)

Position \_\_\_\_\_

Email \_\_\_\_\_

Supply Location \_\_\_\_\_

**CRUSHED GRAVEL -- ALDOT SPECIFICATION SIZES 467 through 78**

**Note: Additional lines are provided if Bidder wishes to bid from more than one supply location.**

Product/Size	Supplier Quarry Or Source Name	Supplier Plant or Yard Name (If Any)	Plant or Yard Address	Price per Ton FOB Supply Location	Price per Ton Delivered
ALDOT No. 467				\$	\$
ALDOT No. 467				\$	\$
ALDOT No. 5				\$	\$
ALDOT No. 5				\$	\$
ALDOT No. 57				\$	\$
ALDOT No. 57				\$	\$
ALDOT No. 78				\$	\$
ALDOT No. 78				\$	\$

**BID #WG26-17 RESPONSE FORM**  
**CRUSHED LIMESTONE - ALDOT SPECIFICATIONS 467 through 8910**  
**Maintenance Area -100**

**Note: Additional lines are provided if Bidder wishes to bid from more than one supply location.**

Product/Size	Supplier Quarry Or Source Name (If Any)	Supplier Plant or Yard Name	Plant or Yard Address	Price per Ton FOB Supply Location	Price per Ton Delivered
ALDOT No. 467				\$	\$
ALDOT No. 467				\$	\$
ALDOT No. 467				\$	\$
ALDOT No. 4				\$	\$
ALDOT No. 4				\$	\$
ALDOT No. 4				\$	\$
ALDOT No. 57				\$	\$
ALDOT No. 57				\$	\$
ALDOT No. 57				\$	\$
ALDOT No. 67				\$	\$
ALDOT No. 67				\$	\$
ALDOT No. 67				\$	\$
ALDOT No. 78				\$	\$
ALDOT No. 78				\$	\$
ALDOT No. 78				\$	\$
ALDOT No. 89				\$	\$
ALDOT No. 89				\$	\$
ALDOT No. 8910				\$	\$
ALDOT No. 8910				\$	\$
ALDOT No. 5				\$	\$
ALDOT No. 5				\$	\$

**BID#WG26-17 BID RESPONSE FORM**  
**CRUSHED LIMESTONE RIP RAP - ALDOT SIZES Class 1, 2, 3 and Gabion Stone**  
**Maintenance Area -100**

**Note: Additional lines are provided if Bidder wishes to bid from more than one supply location.**

Product/Size	Supplier Quarry Or Source Name	Supplier Plant or Yard Name (If Any)	Plant or Yard Address	Price per Ton FOB Supply Location	Price per Ton Delivered
ALDOT Class 1				\$	\$
ALDOT Class 1				\$	\$
ALDOT Class 2				\$	\$
ALDOT Class 2				\$	\$
ALDOT Class 3				\$	\$
ALDOT Class 3				\$	\$
ALDOT 3" X 6" Gabion Stone				\$	\$
ALDOT 3" X 6" Gabion Stone				\$	\$

**RECYCLED CRUSHED CONCRETE PRODUCTS**

**Note: Additional lines are provided if Bidder wishes to bid from more than one supply location.**

Product/Size	Supplier Plant or Yard Name (If Any)	Plant or Yard Address	Price per Ton FOB Supply Location	Price Per Ton Delivered
2" x 0 Base			\$	\$
6" x 2" Cobbles			\$	\$
Rubble Riprap (Less than 300 lb.)			\$	\$

**BID#WG26-17 BID RESPONSE FORM**  
**CRUSHED LIMESTONE BASE - ALDOT SPECIFICATION 825-A & 825-B**  
**Maintenance Area -100**

**825 -A**

**Note: Additional lines are provided if Bidder wishes to bid from more than one supply location.**

Supplier Quarry or Source Name	Supplier Plant or Yard Name (If Any)	Plant or Yard Address	Price per Ton FOB Supply Location	Price per Ton Delivered
			\$	\$
			\$	\$
			\$	\$
			\$	\$

**825 -B**

**Note: Additional lines are provided if Bidder wishes to bid from more than one supply location.**

Supplier Quarry or Source Name	Supplier Plant or Yard Name (If Any)	Plant or Yard Address	Price per Ton FOB Supply Location	Price per Ton Delivered
			\$	\$
			\$	\$
			\$	\$
			\$	\$

**BID#WG26-17 BID RESPONSE FORM**  
**2" Minus Screened Limerock Base**  
**Maintenance Area -100**

**2" Minus Screened Limerock Base**

**Note: Additional lines are provided if Bidder wishes to bid from more than one supply location.**

Supplier Quarry or Source Name	Supplier Plant or Yard Name (If Any)	Plant or Yard Address	Price per Ton FOB Supply Location	Price per Ton Delivered
			\$	\$
			\$	\$
			\$	\$
			\$	\$

**White Sand - Washed**

**Note: Additional lines are provided if Bidder wishes to bid from more than one supply location.**

Supplier Quarry or Source Name	Supplier Plant or Yard Name (If Any)	Plant or Yard Address	Price per Ton FOB Supply Location	Price per Ton Delivered
			\$	\$
			\$	\$
			\$	\$
			\$	\$

**BID #WG26-17 RESPONSE FORM**  
**CRUSHED AGGREGATES**  
**Maintenance Area - 200**

Date \_\_\_\_\_

Company Name \_\_\_\_\_

Address \_\_\_\_\_

Phone Number ( ) \_\_\_\_\_

Fax Number ( ) \_\_\_\_\_

Authorized Signature \_\_\_\_\_  
(Please print or type Name)

Position \_\_\_\_\_

Email \_\_\_\_\_

Supply Location \_\_\_\_\_

**CRUSHED GRAVEL -- ALDOT SPECIFICATION SIZES 467 through 78**

**Note: Additional lines are provided if Bidder wishes to bid from more than one supply location.**

Product/Size	Supplier Quarry Or Source Name	Supplier Plant or Yard Name (If Any)	Plant or Yard Address	Price per Ton FOB Supply Location	Price per Ton Delivered
ALDOT No. 467				\$	\$
ALDOT No. 467				\$	\$
ALDOT No. 5				\$	\$
ALDOT No. 5				\$	\$
ALDOT No. 57				\$	\$
ALDOT No. 57				\$	\$
ALDOT No. 78				\$	\$
ALDOT No. 78				\$	\$

**BID #WG26-17 RESPONSE FORM**  
**CRUSHED LIMESTONE - ALDOT SPECIFICATIONS 467 through 8910**  
**Maintenance Area -200**

**Note: Additional lines are provided if Bidder wishes to bid from more than one supply location.**

Product/Size	Supplier Quarry Or Source Name	Supplier Plant or Yard Name (If Any)	Plant or Yard Address	Price per Ton FOB Supply Location	Price per Ton Delivered
ALDOT				\$	\$
No. 467					
ALDOT				\$	\$
No. 467					
ALDOT				\$	\$
No. 467					
ALDOT				\$	\$
No. 4					
ALDOT				\$	\$
No. 4					
ALDOT				\$	\$
No. 4					
ALDOT				\$	\$
No. 57					
ALDOT				\$	\$
No. 57					
ALDOT				\$	\$
No. 57					
ALDOT				\$	\$
No. 67					
ALDOT				\$	\$
No. 67					
ALDOT				\$	\$
No. 67					
ALDOT				\$	\$
No. 78					
ALDOT				\$	\$
No. 78					
ALDOT				\$	\$
No. 78					
ALDOT				\$	\$
No. 89					
ALDOT				\$	\$
No. 89					
ALDOT				\$	\$
No. 8910					
ALDOT				\$	\$
No. 8910					
ALDOT				\$	\$
No. 5					
ALDOT				\$	\$
No. 5					

**BID#WG26-17 BID RESPONSE FORM**  
**CRUSHED LIMESTONE RIP RAP - ALDOT SIZES Class 1, 2, 3 and Gabion Stone**  
**Maintenance Area -200**

**Note: Additional lines are provided if Bidder wishes to bid from more than one supply location.**

Product/Size	Supplier Quarry Or Source Name	Supplier Plant or Yard Name (If Any)	Plant or Yard Address	Price per Ton FOB Supply Location	Price per Ton Delivered
ALDOT Class 1				\$	\$
ALDOT Class 1				\$	\$
ALDOT Class 2				\$	\$
ALDOT Class 2				\$	\$
ALDOT Class 3				\$	\$
ALDOT Class 3				\$	\$
ALDOT 3" X 6" Gabion Stone				\$	\$
ALDOT 3" X 6" Gabion Stone				\$	\$

**RECYCLED CRUSHED CONCRETE PRODUCTS**

**Note: Additional lines are provided if Bidder wishes to bid from more than one supply location.**

Product/Size	Supplier Quarry Or Source Name	Supplier Plant or Yard Name (If Any)	Plant or Yard Address	Price per Ton FOB Supply Location	Price per Ton Delivered
2" x 0 Base				\$	\$
6" x 2" Cobbles				\$	\$
Rubble Riprap (Less than 300 lb.)				\$	\$

**BID#WG26-17 BID RESPONSE FORM**  
**CRUSHED LIMESTONE BASE - ALDOT SPECIFICATION 825-A & 825-B**  
**Maintenance Area -200**

**825 -A**

**Note: Additional lines are provided if Bidder wishes to bid from more than one supply location.**

Supplier Quarry or Source Name	Supplier Plant or Yard Name (If Any)	Plant or Yard Address	Price per Ton FOB Supply Location	Price per Ton Delivered
			\$	\$
			\$	\$
			\$	\$
			\$	\$

**825 -B**

**Note: Additional lines are provided if Bidder wishes to bid from more than one supply location.**

Supplier Quarry or Source Name	Supplier Plant or Yard Name (If Any)	Plant or Yard Address	Price per Ton FOB Supply Location	Price per Ton Delivered
			\$	\$
			\$	\$
			\$	\$
			\$	\$

**BID#WG26-17 BID RESPONSE FORM**  
**2" Minus Screened Limerock Base**  
**Maintenance Area -200**

**2" Minus Screened Limerock Base**

**Note: Additional lines are provided if Bidder wishes to bid from more than one supply location.**

Supplier Quarry or Source Name	Supplier Plant or Yard Name (If Any)	Plant or Yard Address	Price per Ton FOB Supply Location	Price per Ton Delivered
			\$	\$
			\$	\$
			\$	\$
			\$	\$

**White Sand - Washed**

**Note: Additional lines are provided if Bidder wishes to bid from more than one supply location.**

Supplier Quarry or Source Name	Supplier Plant or Yard Name (If Any)	Plant or Yard Address	Price per Ton FOB Supply Location	Price per Ton Delivered
			\$	\$
			\$	\$
			\$	\$
			\$	\$

**BID #WG26-17 RESPONSE FORM**  
**CRUSHED AGGREGATES**  
**Maintenance Area - 300**

Date \_\_\_\_\_

Company Name \_\_\_\_\_

Address \_\_\_\_\_

Phone Number ( ) \_\_\_\_\_

Fax Number ( ) \_\_\_\_\_

Authorized Signature \_\_\_\_\_  
(Please print or type Name)

Position \_\_\_\_\_

Email \_\_\_\_\_

Supply Location \_\_\_\_\_

**CRUSHED GRAVEL -- ALDOT SPECIFICATION SIZES 467 through 78**

**Note: Additional lines are provided if Bidder wishes to bid from more than one supply location.**

Product/Size	Supplier Quarry Or Source Name	Supplier Plant or Yard Name (If Any)	Plant or Yard Address	Price per Ton FOB Supply Location	Price per Ton Delivered
ALDOT No. 467				\$	\$
ALDOT No. 467				\$	\$
ALDOT No. 5				\$	\$
ALDOT No. 5				\$	\$
ALDOT No. 57				\$	\$
ALDOT No. 57				\$	\$
ALDOT No. 78				\$	\$
ALDOT No. 78				\$	\$

**BID #WG26-17 RESPONSE FORM**  
**CRUSHED LIMESTONE - ALDOT SPECIFICATIONS 467 through 8910**  
**Maintenance Area -300**

**Note: Additional lines are provided if Bidder wishes to bid from more than one supply location.**

Product/Size	Supplier Quarry Or Source Name	Supplier Plant or Yard Name (If Any)	Plant or Yard Address	Price per Ton FOB Supply Location	Price per Ton Delivered
ALDOT No. 467				\$	\$
ALDOT No. 467				\$	\$
ALDOT No. 467				\$	\$
ALDOT No. 4				\$	\$
ALDOT No. 4				\$	\$
ALDOT No. 4				\$	\$
ALDOT No. 57				\$	\$
ALDOT No. 57				\$	\$
ALDOT No. 57				\$	\$
ALDOT No. 67				\$	\$
ALDOT No. 67				\$	\$
ALDOT No. 67				\$	\$
ALDOT No. 78				\$	\$
ALDOT No. 78				\$	\$
ALDOT No. 78				\$	\$
ALDOT No. 89				\$	\$
ALDOT No. 89				\$	\$
ALDOT No. 8910				\$	\$
ALDOT No. 8910				\$	\$
ALDOT No. 5				\$	\$
ALDOT No. 5				\$	\$

**BID#WG26-17 BID RESPONSE FORM**  
**CRUSHED LIMESTONE RIP RAP - ALDOT SIZES Class 1, 2, 3 and Gabion Stone**  
**Maintenance Area -300**

**Note: Additional lines are provided if Bidder wishes to bid from more than one supply location.**

Product/Size	Supplier Quarry Or Source Name (If Any)	Supplier Plant or Yard Name	Plant or Yard Address	Price per Ton FOB Supply Location	Price per Ton Delivered
ALDOT Class 1				\$	\$
ALDOT Class 1				\$	\$
ALDOT Class 2				\$	\$
ALDOT Class 2				\$	\$
ALDOT Class 3				\$	\$
ALDOT Class 3				\$	\$
ALDOT 3" X 6" Gabion Stone				\$	\$
ALDOT 3" X 6" Gabion Stone				\$	\$

**RECYCLED CRUSHED CONCRETE PRODUCTS**

**Note: Additional lines are provided if Bidder wishes to bid from more than one supply location.**

Product/Size	Supplier Plant or Yard Name (If Any)	Plant or Yard Address	Price per Ton FOB Supply Location	Price Per Ton Delivered
2" x 0 Base			\$	\$
6" x 2" Cobbles			\$	\$
Rubble Riprap (Less than 300 lb.)			\$	\$

**BID#WG26-17 BID RESPONSE FORM**  
**CRUSHED LIMESTONE BASE - ALDOT SPECIFICATION 825-A & 825-B**  
**Maintenance Area -300**

**825 -A**

**Note: Additional lines are provided if Bidder wishes to bid from more than one supply location.**

Supplier Quarry or Source Name	Supplier Plant or Yard Name (If Any)	Plant or Yard Address	Price per Ton FOB Supply Location	Price per Ton Delivered
			\$	\$
			\$	\$
			\$	\$
			\$	\$

**825 -B**

**Note: Additional lines are provided if Bidder wishes to bid from more than one supply location.**

Supplier Quarry or Source Name	Supplier Plant or Yard Name (If Any)	Plant or Yard Address	Price per Ton FOB Supply Location	Price per Ton Delivered
			\$	\$
			\$	\$
			\$	\$
			\$	\$

**BID#WG26-17 BID RESPONSE FORM**  
**2" Minus Screened Limerock Base**  
**Maintenance Area -300**

**2" Minus Screened Limerock Base**

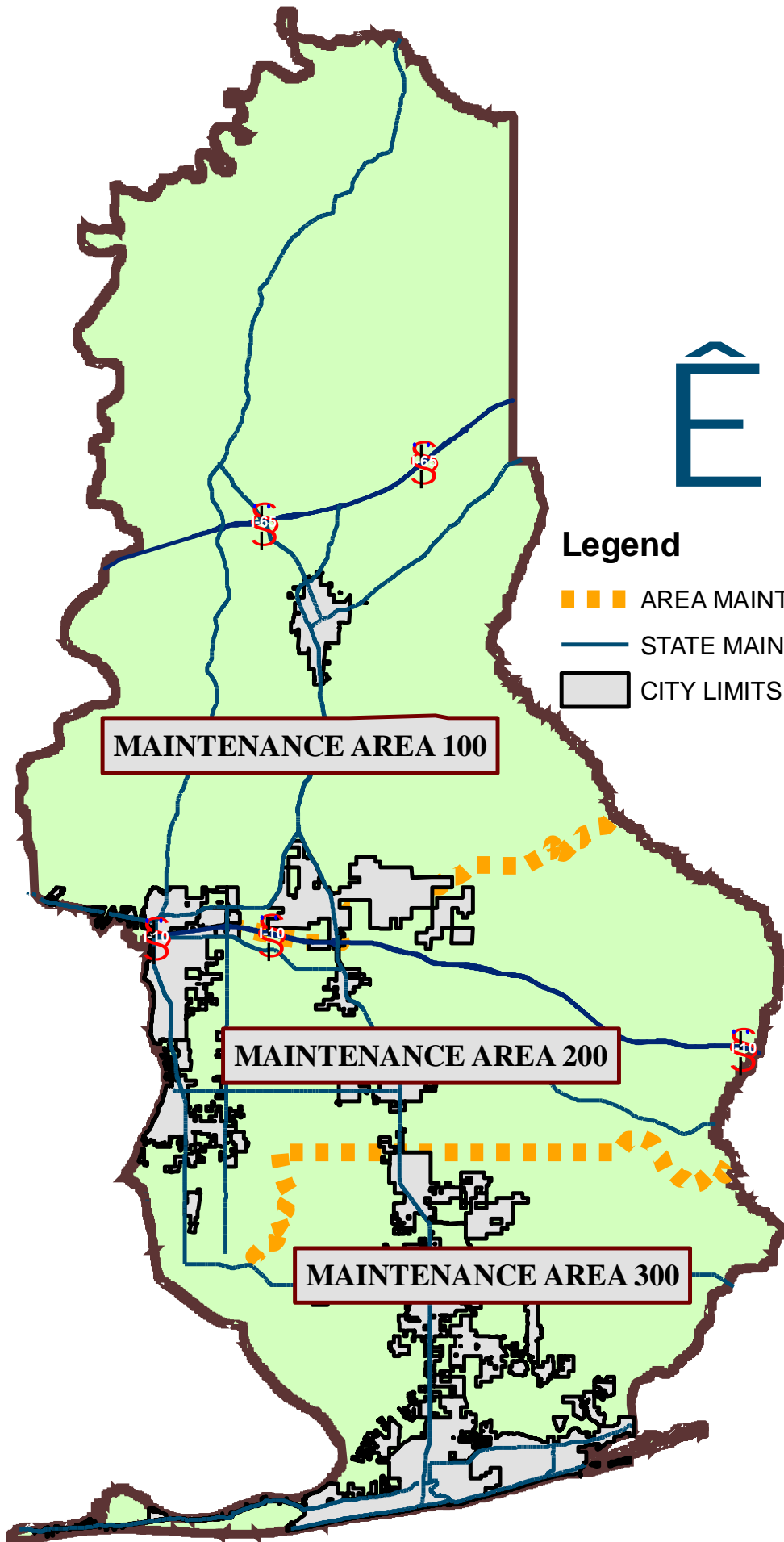
**Note: Additional lines are provided if Bidder wishes to bid from more than one supply location.**

Supplier Quarry or Source Name	Supplier Plant or Yard Name (If Any)	Plant or Yard Address	Price per Ton FOB Supply Location	Price per Ton Delivered
			\$	\$
			\$	\$
			\$	\$
			\$	\$

**White Sand - Washed**

**Note: Additional lines are provided if Bidder wishes to bid from more than one supply location.**

Supplier Quarry or Source Name	Supplier Plant or Yard Name (If Any)	Plant or Yard Address	Price per Ton FOB Supply Location	Price per Ton Delivered
			\$	\$
			\$	\$
			\$	\$
			\$	\$



**Legend**

- AREA MAINT. DIVIDING LINES
- STATE MAINTAINED HIGHWAYS
- CITY LIMITS

MAINTENANCE AREA 100

MAINTENANCE AREA 200

MAINTENANCE AREA 300

---

## CERTIFICATION REGARDING LOBBYING

### Certification for Contracts, Grants, Loans, and Cooperative Agreements

The undersigned certifies, to the best of his or her knowledge and belief, that:

(1) No Federal appropriated funds have been paid or will be paid, by or on behalf of the undersigned, to any person for influencing or attempting to influence an officer or employee of an agency, a Member of Congress, an officer or employee of Congress, or an employee of a Member of Congress in connection with the awarding of any Federal contract, the making of any Federal grant, the making of any Federal loan, the entering into of any cooperative agreement, and the extension, continuation, renewal, amendment, or modification of any Federal contract, grant, loan, or cooperative agreement.

(2) If any funds other than Federal appropriated funds have been paid or will be paid to any person for influencing or attempting to influence an officer or employee of any agency, a Member of Congress, an officer or employee of Congress, or an employee of a Member of Congress in connection with this Federal contract, grant, loan, or cooperative agreement, the undersigned shall complete and submit Standard Form-LLL, "Disclosure of Lobbying Activities," in accordance with its instructions.

(3) The undersigned shall require that the language of this certification be included in the award documents for all subawards at all tiers (including subcontracts, subgrants, and contracts under grants, loans, and cooperative agreements) and that all subrecipients shall certify and disclose accordingly. This certification is a material representation of fact upon which reliance was placed when this transaction was made or entered into. Submission of this certification is a prerequisite for making or entering into this transaction imposed by section 1352, title 31, U.S. Code. Any person who fails to file the required certification shall be subject to a civil penalty of not less than \$10,000 and not more than \$100,000 for each such failure.

### Statement for Loan Guarantees and Loan Insurance

The undersigned states, to the best of his or her knowledge and belief, that:

If any funds have been paid or will be paid to any person for influencing or attempting to influence an officer or employee of any agency, a Member of Congress, an officer or employee of Congress, or an employee of a Member of Congress in connection with this commitment providing for the United States to insure or guarantee a loan, the undersigned shall complete and submit Standard Form-LLL, "Disclosure of Lobbying Activities," in accordance with its instructions. Submission of this statement is a prerequisite for making or entering into this transaction imposed by section 1352, title 31, U.S. Code. Any person who fails to file the required statement shall be subject to a civil penalty of not less than \$10,000 and not more than \$100,000 for each such failure.

<b>* APPLICANT'S ORGANIZATION</b> <div style="border: 1px solid black; height: 20px; width: 100%; margin-top: 5px;"></div>	
<b>* PRINTED NAME AND TITLE OF AUTHORIZED REPRESENTATIVE</b>	
Prefix: <input style="width: 100px;" type="text"/>	* First Name: <input style="width: 150px;" type="text"/>
	Middle Name: <input style="width: 150px;" type="text"/>
* Last Name: <input style="width: 350px;" type="text"/>	Suffix: <input style="width: 100px;" type="text"/>
* Title: <input style="width: 400px;" type="text"/>	
<b>* SIGNATURE:</b> <input style="width: 350px;" type="text"/>	
<b>* DATE:</b> <input style="width: 150px;" type="text"/>	

---